

USER MANUAL

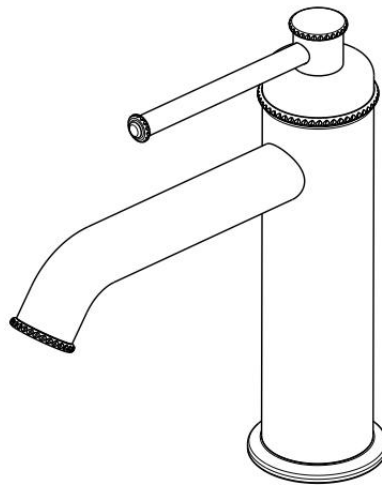


Thank you for choosing Better Bathrooms.
Please read this manual before installing your product
and keep for future reference.

**better
bathrooms**

Product name: Brushed Brass Modern Traditional Mono Basin Mixer Tap - Lyla

Product code/s :LYBBMONBM



- **Single-person assembly**
- **Tools required**
- **We always recommend using professional tradespeople to install your product**

V1_10.06.2025

Congratulations on your purchase

And welcome to our growing gang of savvy shoppers

We're on a mission to bring you extraordinary bathroom products, for less. From modern to traditional style ceramics, plus the gorgeous fixtures, fittings and furniture to match. So, you can fall in love with your space every single day.

As one of the UK's largest independent bathroom stores, we've received countless awards; including the National Business Awards UK, the Digital Entrepreneur Awards and being placed on The Sunday Times Fast Track 100.

We hope your new product goes above and beyond your expectations. However, should any problems occur, please:

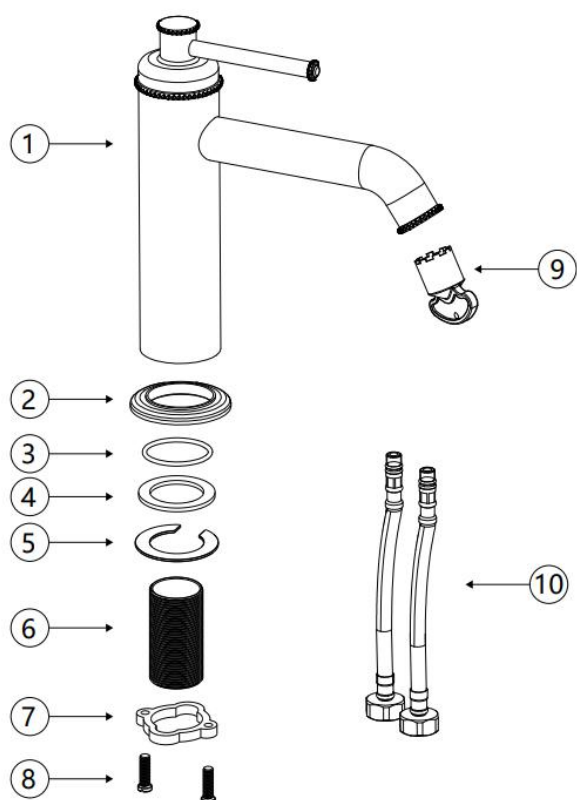
- log in to your account and contact our customer services team via your self-serve portal – betterbathrooms.com/CustomerAccount/Login
- contact us via betterbathrooms.com/content/contact-us

Important information

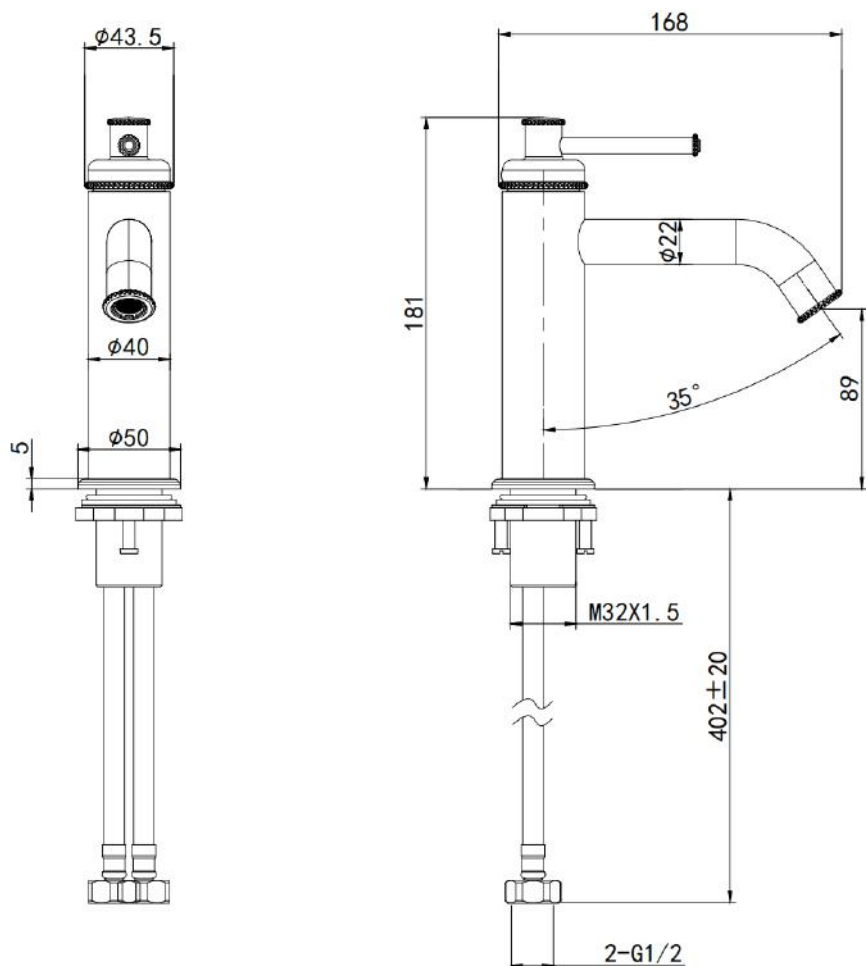
- Please read these instructions thoroughly and retain for future reference
- Pressures should meet minimum stated on the website
- Pressures must be balanced for optimum performance
- Always check for pipes and cables before drilling

Contents

1. Faucet body
2. Base plate
3. O-ring
4. Rubber seat
5. Locking plate
6. Thread pipe
7. Nuts
8. Screws
9. Aerator key
10. Flexible tails



Parts / Diagrams

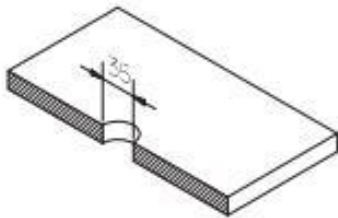


Tools required

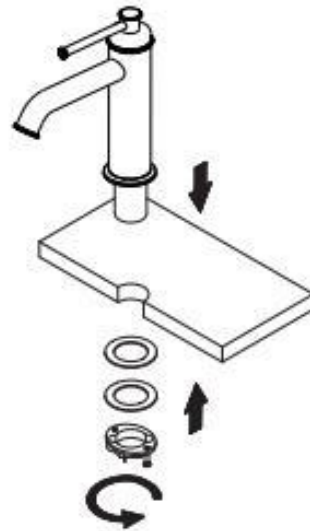
Installation requires a screwdriver, an adjustable wrench and adjustable pliers



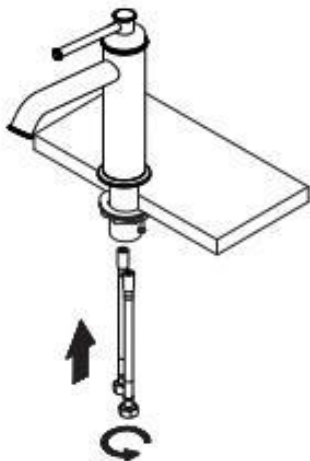
Installation



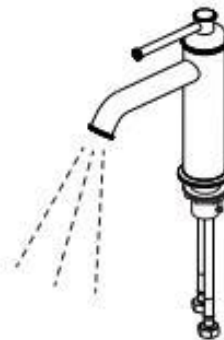
1. Mark hole in benchtop at desired position and drill a 35mm hole.



2. Install the basin mixer by fixing the basin/benchtop between the mixer and the rubber seal, locking plate and nut.

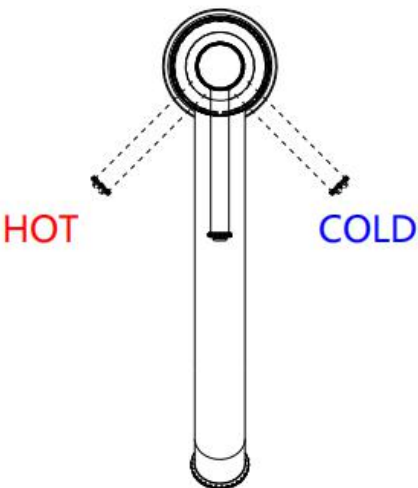
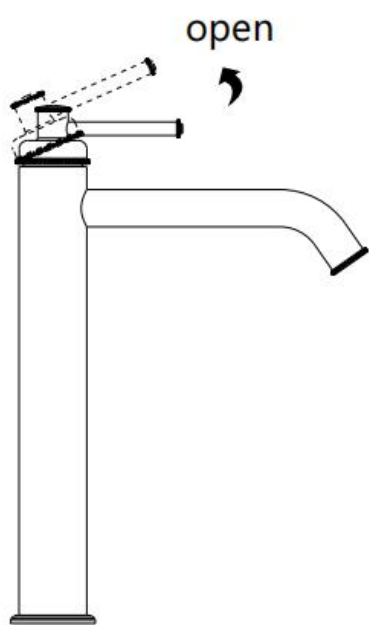


3. Connect the hot and cold flexible tails to basin mixer. The cold supply must be on the right and the tails should only be hand tightened into the mixer body.



4. Attach the flexible hoses to the water supply and tighten. Test and commission.

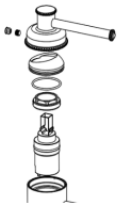
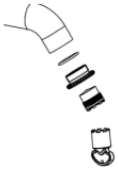
Operation



Troubleshooting

Issues	Possible Causes:	Solutions:
Low Water Pressure/Flow	Clogged aerator	Clean the aerator: Unscrew the faucet outlet and remove debris.
	Blocked cartridge/strainer	Flush the cartridge: Turn off water supply, disassemble valve, rinse sediment.
	Partially closed shutoff valves	Check supply valves: Ensure both hot/cold valves under sink are fully open.
Spout Drip	Mineral buildup preventing full closure Worn cartridge/seals Worn rubber gasket inside the aerator	Soak cartridge in vinegar to dissolve mineral deposits. Replace cartridge Replace the rubber gasket
Under-Sink Leak	Loose connections Cracked flex hoses	Hand-tighten nuts on supply lines (avoid over-tightening) Replace new flexible hoses
Handle Loosening	Mineral buildup in handle mechanism	Descale with vinegar: Soak handle parts in vinegar.
	Loose handle screw	Tighten set screw: Locate screw under handle cap.

Maintenance

1.Change cartridge		<p>Step 1: Turn Off Water Supply</p> <p>Step 2: Remove the Handle</p> <p>Step 3: Remove the Locking Nut</p> <p>Step 4: Pull Out the Old Cartridge</p> <p>Step 5: Install the New Cartridge</p> <p>Step 6: Reassemble the Faucet</p>
2. Change aerator		<p>Step 1: Turn Off Water Supply</p> <p>Step 2: Remove the old aerator by the provided aerator key (lefty loosey)</p> <p>Step 3: Install the new aerator clockwise (righty tighty)</p>

Cleaning

Clean the product surface with a soft cloth and a mild detergent or citric acid solution. The use of any rough materials, as well as corrosive or abrasive cleaning agents, is not recommended as they may cause damage to the coating.

For more information

- visit betterbathrooms.com
- email customerservices@buyitdirect.co.uk
- call 0330 390 3062
- write to Trident Business Park, Neptune Way, Huddersfield, HD2 1UA

better 
bathrooms

Part of the BuyItDirect Group